



Funded by
UK Government



Sussex Nature Recovery

A collective blueprint for targeted action

How to have your say on your Sussex LNRS

A webinar for farmers, landowners and land managers

23rd October 2025, 7pm

SussexNatureRecovery.org.uk



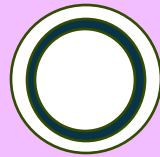
First, a bit of housekeeping



Chat

Technical problem?

Let us know if you can't see the slides or hear the presenters, by posting in the chat.



Record

This session is being recorded.

It will be uploaded to the Sussex Nature Recovery website in the next few days.



Questions

Please ask questions using the Q&A button. You can do this anonymously.

Upvote those questions you want to hear answered by our panel



Why is the LNRS of interest to those who own, manage or farm land?

- **It's a tool** to help those interested to implement nature's recovery across Sussex.
- It **shows where priority habitats and species can be recovered or supported** to provide the biggest benefit to nature and the wider environment.
- If you're already supporting habitats and species, or considering it, this can help **inform your decisions** and **highlight the areas of your land that hold the greatest potential for nature recovery**.
- While the LNRS **does not directly link to agri-environmental schemes/ELMS**, it is written to align with them where possible.
- As a statutory, participatory and peer-reviewed document, the LNRS **can give you, funders and investors confidence** if you *choose* to take any of its recommendations forward.

The LNRS is made up of a written document and a map. In this session, we'll be walking you through:

- How you can find your land on the LNRS map;
- What it means if LNRS measures have been mapped on or near your land (and what this *doesn't* mean);
- If no LNRS measures have been mapped to your land, that does not mean your land does not have potential for more nature. 60% of LNRS measures are not mapped and could be relevant.



Agenda

- About Sussex Local Nature Recovery Strategies
- Key components of Sussex LNRS (getting you familiar)
- Navigating the Local Habitat Map and how to comment on it
- What happens next
- Q&A (aiming for 20 mins)



About Sussex Local Nature Recovery Strategies

Overview

- A new statutory process to help nature.
- 48 strategies being developed across England, led by county councils.
- They all follow a defined process but vary due to quantity/quality of local data and resources, and by their interpretation of the task.
- 2 strategies cover Sussex:
 - East Sussex and Brighton & Hove
 - West Sussex
- Shared stakeholders and a history of close collaboration led to developing aspects of the Sussex strategies together, under the banner of Sussex Nature Recovery.
- Over 2,000 Sussex residents and organisations involved in their development via workshops, surveys, webinars, mapping tools, task & finish groups, presentations and more.
- The two strategies set out the main principles, priorities and actions for nature recovery in Sussex.
- **We will be spending the next few years understanding how best to embed them into local decision making.**

Consultation
Six-week duration
Closes
26 November 2025

Publication
Spring 2026

Some of those involved (plus all District & Borough councils)



High Weald
National
Landscape



Impact and scope

- **Unlock funding:** direct Biodiversity Net Gain funding into areas that will deliver the greatest benefits to nature. Role in guiding agri-schemes to be defined.
- **Inform local planning:** role in planning process and informing public authorities' strengthened biodiversity duty
- **Support decision-making:** provide an evidence-base to give confidence to landowners, funders, investors.
- **Nature-based solutions:** support their delivery which will help direct funding from private sector.
- **Targeting:** ensure the right things are done in the most effective areas.

What they can't do

- *Can't dictate* how land will be used.
- Place *no obligations* on landowners or any other organisation to carry actions out.
- *Can't protect more spaces* for nature - Areas mapped for habitat creation/improvement do not prevent other legitimate land uses, do not place new restrictions on developing land, and do not identify areas to be given legal protection.
- While they highlight pressures such as pollution and housing development, they *can't tackle the sources* of these pressures if they are covered by other frameworks.



What they contain

Supporting information

- Ecological evidence and data
- Existing priorities from 150 published plans & strategies
- Views and concerns from local people
- Existing projects, initiatives and ambitions
- Local/national expertise and rigour

The 'Tool kit'

7 principles

24 habitat priorities

100+ measures
(practical, feasible actions)

Prioritised species list and specific
species measures

Local Habitat Map

The format: 4 written parts and an interactive map



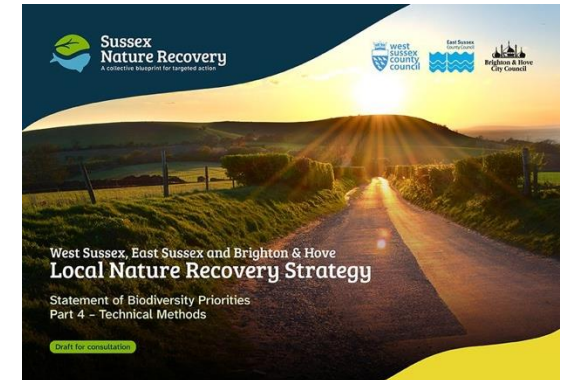
West Sussex
Local Nature Recovery Strategy
Statement of Biodiversity Priorities
Part 1 – Context & Description of
Strategy Area



West Sussex
Local Nature Recovery Strategy
Statement of Biodiversity Priorities
Part 2 – Priorities, Measures and
the Local Habitat Map



West Sussex
Local Nature Recovery Strategy
Statement of Biodiversity Priorities
Part 3 – Priority Species



West Sussex, East Sussex and Brighton & Hove
Local Nature Recovery Strategy
Statement of Biodiversity Priorities
Part 4 – Technical Methods

Consultation

- Both strategies have their own consultation hub on West Sussex County Councils' YourVoice Platform.
- Hubs have links to documents and map plus user guides and FAQs.

3 ways to have your say

- **Take the consultation survey**
 - Scroll down the hub page to start the survey.
 - 36 questions. All are voluntary, many are multiple choice.
 - Survey canvasses your awareness of and involvement with the LNRS. Also asks your views on the key components of Parts 1-3 and the map.
 - Skip any questions that don't feel relevant.
- **Add a comment directly to the map**
 - If you have comment about a location and what is or isn't on the map, you can add a pin to the interactive map itself.
- **Email us if you have more detailed feedback**
 - EastSussexLNRS@eastsussex.gov.uk
 - WestSussexLNRS@westsussex.gov.uk

The image shows a screenshot of a web page for the West Sussex Local Nature Recovery Strategy (LNRS) consultation. At the top, there is a banner with a kingfisher and the text "Have your say to help nature in West Sussex". Below this is a breadcrumb trail: "Home / Environment & Climate Change / West Sussex LNRS - Help shape your Local Nature Recovery Strategy". The main heading is "West Sussex LNRS - Help shape your Local Nature Recovery Strategy". There are social media icons for Facebook, Twitter, LinkedIn, and Email. A featured image shows people planting trees in a field. To the right of the image is a text box: "A new strategy to help nature in West Sussex. The first Local Nature Recovery Strategy (LNRS) for West Sussex has now been drafted. Informed by the views and expertise of more than 1,000 local people and organisations, the strategy...". Below the image and text is a "SURVEY" button. The survey interface is shown in a separate window, titled "Survey", with a progress bar indicating "0% answered". The survey starts with an "About you" section, stating "This consultation is suitable for those aged 16 and above." The first question is "1. Where in West Sussex do you live? (Select one)" with a dropdown menu. The second question is "2. Which of the below best describes you? (Select one)" with a dropdown menu. The third question is "3. Are you responding on behalf of an organisation or an individual?" with a dropdown menu.

Key components of Sussex LNRS

Description of Sussex nature

Part 1, Section 4

What is it?

- A summary of our priority habitats: what they are, where they are found, their condition and the pressures they're under.

Why is this relevant to you?

- No single 'State of Nature' report for Sussex. Patchy habitat data locally and nationally.
- Multiple sources reviewed and data drawn together to create this Description.
- Peer reviewed by a panel Sussex's leading nature experts.
- Provides the first ever comprehensive summary of the condition of Sussex nature.
- A benchmark from which to assess progress and future trends.

West Sussex Local Nature Recovery Strategy: Part 1 Nature in West Sussex - description



Farmed Landscape & Soils

A combination of soil type and topography strongly influences farming practices, and in turn the wildlife that is found there. Our varied geology is reflected in our soils, which can be free-draining or waterlogged, acid or alkaline, rich loams, or thin, sandy and nutrient poor.

West Sussex is not generally an agriculturally intensive landscape, especially by the standards of the South East, but rather a farmed landscape with rich pockets of wildlife. The majority of our highest grade agricultural land is within the fertile South Coast Plains. Much of the farming here is horticulture, followed by cereals then livestock grazing. The fields are large in the southern part of the Plains and field boundaries are mainly drainage ditches with few trees and hedges. Smaller fields are found to the north where there is a network of broadleaved woodland and hedgerows. Of the 164,496ha of agricultural land (Grades 1-5) in the LNRS area¹², 107,547ha (65%) is farmed with 1,343 land holdings. The average farm size is 80ha, lower than the South East (87ha) and England (85ha) averages. The distribution of farms by size is fairly even, with 11% smaller than 5ha and 23% larger than 100ha. Map 2 (Appendix 1A) shows the distribution of agricultural land (Grades 1-3) and arable land cover in West Sussex.

¹² Defra, 2024. Structure of the agricultural industry in England and the UK at June.
¹³ JNCC, 2016. UK Biodiversity Action Plan Priority Habitat Descriptions. Arable Field Margins.
¹⁴ Natural England, 2020. Climate Change Adaptation Manual. Arable Field Margins.

Our farmed landscape is essentially a mosaic of a range of different habitat types including grassland, woodland, hedges, heathland and freshwater. Grasslands vary, depending on the soil with marshy grasslands also occurring on damper soils. Improved grasslands are areas that have been ploughed, reseeded or heavily fertilised.


Arable field margins are strips or blocks around arable fields that are managed specifically to provide benefits for wildlife. They are usually on the outer 2-12m margin of the arable field, although blocks occasionally extend further into the field centre¹³. They include cultivated, low-input margins which may be sown to provide seed for wild birds, with wildflowers or agricultural legumes (peas or beans that fix nitrogen in the soil) and managed to provide pollen and nectar resources for invertebrates, or managed as grass strips with mixtures of tussocky and fine-leaved grasses¹⁴.



© Mob grazing © High Weald National Landscape Partnership

SussexNatureRecovery.org.uk 

West Sussex Local Nature Recovery Strategy: Part 1 Nature in West Sussex - description




Species-rich Grassland

Our species-rich grasslands include **lowland calcareous grassland** (chalk grassland), **species-rich meadows** (including lowland meadows) and pastures, **waxcap grasslands**, and **neutral grasslands**. We also have acid grassland but as that is most commonly found in association with heathland habitats, it is covered in that section of the description. Similarly, wet grassland and grazing marsh are covered in the wetland section. Map 3 (Appendix 1A) shows the distribution of chalk grassland and lowland meadows in West Sussex.


These grasslands are rich in wildlife and provide important ecosystem services but they depend on continuity of appropriate and sympathetic management to maintain their ecological value. Ongoing agricultural "improvement" of semi-natural grassland (through re-seeding, use of fertiliser and herbicides to increase productivity), neglect, land use change and urban development are key threats that continue to reduce and fragment the remaining areas of ecologically important grassland both across the UK and in West Sussex.

Unimproved chalk grassland occurs along the length of the South Downs, and unimproved hay meadows and pastures are concentrated on more traditionally managed farms in the High and Low Weald. Waxcap grasslands can be found in cemeteries and churchyards in towns and villages across the county as well as within unimproved grassland on undisturbed soils with a range of pH values. Diverse, semi-natural grassland is usually associated with the farmed landscapes and nature reserves but also occurs in mosaics with other habitats, such as scrub (in transitional¹⁴ vegetation), on woodland rides, in wetlands, on road verges and sometimes in urban greenspaces. The extent of the different species-rich grasslands found in our LNRS area is shown below.



© Grassland meadow © Istock.com/Chris Page

Grassland Type	Extent (ha)	% LNRS area
Lowland calcareous grassland	2736	1.4
Lowland meadows	226	0.1
Waxcap grasslands	1451	0.7
Unimproved neutral grassland	389	0.2
TOTAL	4793	2.4

SussexNatureRecovery.org.uk 

What's currently happening

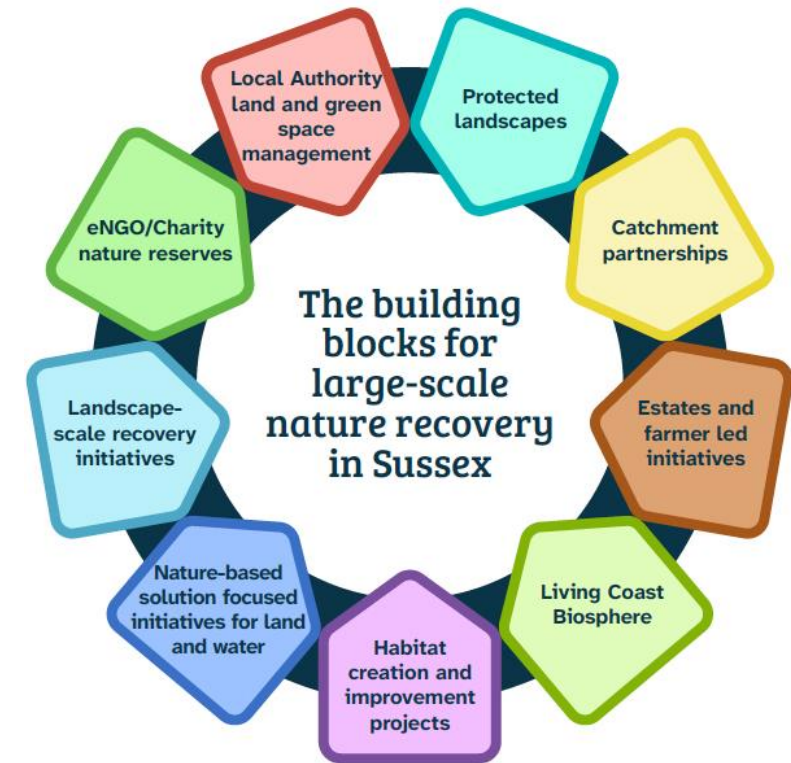
Part 1, Section 5

What is it?

- A summary of existing *landscape-scale* recovery and initiatives. Includes Protected Landscapes, catchment partnerships, farmer clusters, large estates, new movements such as Weald to Waves, and charity and local authority managed land.
- Also has examples of hyper-local action from grassroots groups (provided via our surveys).

Why is this relevant to you?

- Demonstrates that the LNRS is a container for all layers of action across the area.
- Identifies landscape-scale initiatives as our building blocks for nature recovery in Sussex (they already have the ambition, mechanisms, land, etc).
- Acknowledges the contribution to nature's recovery that farmer and land manager-led initiatives are already making.
- Reminder that we are not starting from a blank canvas – huge amount of energy and commitment in Sussex.
- But if there's something you're doing on your land that we don't know about – let us know.



West Sussex Local Nature Recovery Strategy: Part 1

5.4 Local achievements

What is happening already?

A few of the fantastic local nature projects delivered by community groups and councils across West Sussex. Read about many more in our [community group survey results](#).

Eastbrook Community Gardeners – plant trees and flowers in Fishergate and Southwick. Have supplied and laid over £1,250 of wildflower turf in St Aubyn's Crescent.

Steyning Downland Scheme – In partnership with South Downs National Park Authority and Kew Wakehurst, this community group supported the reintroduction of the Duke of Burgundy by creating new habitat, planting and growing food plants and monitoring this butterfly species.

Wild About Warnham – manage 20 acres of former farmland since 2008 to provide optimum habitat for butterflies and other wildlife. 33 butterfly species have now been recorded. Birds and other taxa have colonised the site which is also a valuable educational resource.

Burgess Hill Swift Supporters – have installed nesting boxes and organise swift walks to monitor and educate others about this species.

Friends of Heene Cemetery – undertook ecological surveys of the cemetery and its unimproved meadowland, identifying 723 species and establishing the rich biodiversity of this site in central Worthing. The group have also installed educational posters.

The Woodland, Flora & Fauna Group – erected scores of Barn owl boxes in locations around southern Mid Sussex to provide roosting and breeding opportunities around areas of suitable hunting terrain.

The Wellerness CIC – planted 1500 native trees to increase biodiversity on Wild Heart Hill in Findon. Won the Queens Tree award.

Curtis Avenue Wildlife Garden – cleared a fly-tipped playing field 15 years ago with assistance from local environmental groups. Now a series of habitats for wildlife – woodland, orchard, hedgerows, wildflowers, grassland and ponds – providing a haven for butterflies, bees, insects and birds.

Cuckfield Parish Council – planted two orchards and an 'edible' hedge on a parish council site with an interpretation board to educate visitors. Their Biodiversity Action Plan includes swift nest boxes, a camera trapping project to estimate the local hedgehog population and pilot studies on managing verges for wildflowers.

Manhood Wildlife and Heritage Group – delivering multiple projects for nature across the Manhood Peninsula including fixing and linking its wetlands through their FLOW project, working to safeguard the local water vole population and devising pollinator highways.

Steyning Downland Conservation Volunteers putting in a new water trough. © Willes Field

The Woodland Flora and Fauna Group undertake breeding surveys and identify a young barn owl. © Michael Geller

96

SussexNatureRecovery.org.uk

Opportunities

Part 1, Section 6

What are they?

- A summary of the key nature recovery opportunities from various sources:
 - National Character Areas
 - Protected Landscape Management Plans
 - BOAs (Biodiversity Opportunity Areas)
 - Local Plans

- 22 identified for West Sussex, 23 for East Sussex and Brighton & Hove.

Why is this relevant to you?

- Reflects a consensus on the high-level spatial priorities for nature's recovery for our LNRS areas.
- Important foundation for mapping measures.

East Sussex and Brighton & Hove Local Nature Recovery Strategy: Part 1

Opportunities for nature's recovery in this LNRS

Key nature recovery opportunities within the LNRS area

(as set out in National Character Area statements and other existing plans and strategies)

Low Weald

- Natural Flood Management**
Deliver natural flood management techniques in focus areas upstream of settlements, particularly Lewes, Uckfield, Eastbourne and Hailsham.
- Woodland habitats**
Significantly enhance the network of ancient woodland, gill woodland, shaws, hedgerows and trees – through woodland management and small-scale woodland creation. New woodland creation can help to link the National Park to the High Weald and provide a setting for recreation.
- River systems and wetlands**
Enhance the quality, state and structure of all Wealden rivers, streams, standing water bodies, wetlands and floodplains. Key river catchments: Ouse, Cuckmere, Brede, Rother & Medway.
- Farmed Landscape**
Expand and connect semi-natural habitats across farmland. Expand and enhance areas of unimproved grassland and meadows and restore degraded neutral grassland.

South Downs

- Farmed landscape**
Create additional habitat to support farmland birds and arable plants; expand and connect semi-natural habitats on farmed land; manage farmed land and its habitats to support the function of the aquifer below.
- Chalk grassland**
Restore, expand and re-link chalk grassland habitats along the length of the chalk spine, scarp and dip slopes and dry valleys.
- Coastal habitats and tidal reaches of Ouse and Cuckmere**
Create and enhance coastal habitats and retain natural coastal processes where possible. Take opportunities to reconnect rivers to their floodplains and improve natural river function.
- Seven Sisters and Lullington Heath**
A specific focus on habitat creation and enhancement in this area will support biodiversity and the function of the aquifer.

Pevensey Levels

- Wetland habitats**
Enhance the network of wetland habitats on the Levels, planning for change and resilience to climate change.
- Coastal habitats**
Create and enhance coastal vegetated shingle habitats.

Key

- East Sussex and Brighton & Hove Boundary
- Low Weald
- High Weald
- Romney Marshes
- Pevensey Levels
- South Downs
- South Coast Plain

100 SussexNatureRecovery.org.uk

West Sussex Local Nature Recovery Strategy: Part 1

Opportunities for nature's recovery in this LNRS

South Coast Plain

- Chichester Harbour and Pagham Harbour**
Restore and expand habitats to support biodiversity, aid flood alleviation and improve resilience to climate change. Seek opportunities to create inland wetlands to create a habitat network between Medmerry and Chichester Harbour.
- Manhood Peninsula**
Enhance ditches and wetlands across the peninsula. Explore future options for managed realignment projects for flood risk management and habitat creation. Key area for saltmarsh creation between Medmerry and Pagham Harbour. Manage farmland to support habitat connectivity across the peninsula.
- Chichester District**
Create strategic corridors to ensure connectivity between Chichester Harbour National Landscape and South Downs National Park.
- Chalk Stream floodplains**
Expand areas of semi-natural habitat in chalk stream floodplains with particular emphasis on the more pressurized streams which run south from the dip slope of the South Downs such as the River Ems.

Floodplains of the River Arun and River Adur
Reconnect rivers to floodplains, expand and re-link wetland habitats to increase flood storage capacity, improve water quality and provide wildlife corridors. Key project: Adur River Recovery.

Woodland and hedgerows
Create a strong network of woodlands and hedgerows to form green corridors within the gaps between coastal towns.

High Weald

- Routeways and road verges**
Protect and enhance the ecological function of these historical linear corridors.
- River Ouse**
Enhance the natural function, quality and connectivity of the River Ouse, and the streams, standing water bodies and wetlands in this part of its catchment.
- Woodlands and Grasslands of the High Weald**
Restore and enhance the ancient woodland and species-rich grasslands, expanding and connecting these where this supports the historic field pattern of the area.

South Downs

- Farmed landscape**
Create additional habitat to support farmland birds and arable plants – (particularly in the cereal dominated dip slope). Expand and connect semi-natural habitats. Create and enhance habitats on farmed land to support biodiversity and the function of the aquifer.

Western Downs – fields and slopes
Restore hedgerows using historic hedgerow boundaries, particularly in locations where this will help to impede cross-land flows, encourage water infiltration and improve water quality. Target the expansion of woodlands on steeper slopes to reduce soil erosion.

- Chalk grassland**
Restore, expand and re-link chalk grassland habitats along the length of the chalk spine, scarp and dip slopes and dry valleys.

Key

- West Sussex Boundary
- High Weald
- Low Weald
- Wealden Grassland
- South Coast Plain
- South Downs

101 SussexNatureRecovery.org.uk

Principles

Part 2, Section 3

What are they?

- Seven strategic principles to guide the application of our priorities and measures.
- Describes the key issues related to nature in Sussex and how the strategy helps to address these.

Why is this relevant to you?

- Sets the scene to describe why we need to act and what we need to do. (e.g. coastal habitats at *extreme* risk of climate change).
- Highlights changes needed to current approaches (e.g. designations are *not enough* to keep core areas in good condition).
- Underscores the breadth of action needed – not just habitat creation and enhancement but improving access to nature in urban areas and supporting and championing farmers.

1. In our core areas for nature, hold on to what we have and make it better.
2. Create a network of ‘bigger, better, more and joined-up’ wildlife-rich spaces across our rural and urban landscapes.
3. Think big: work at scale to support ecosystems and natural processes.
4. Showcase and support action for nature across our farmed landscapes.
5. Support species special to the LNRS area.
6. Invest in and use nature to deliver wider benefits where we need them.
7. Bring nature into everyday life, providing places for people to benefit from and engage with nature.

Priorities

Part 2, Section 4

What are they?

- 24 priorities related to habitats (woodland, coastal, river systems, grassland etc).
- Also includes priorities for 'nature networks' (to cover habitat mosaics and nature corridors), and 'Nature, health & wellbeing' (to acknowledge the important link between access to nature and health).
- Each comes with a set of outcome statements that describes what 'success' in 10 years looks like to guide our understanding of their potential short-mid term impact.

Why is this relevant to you?

- Sets out what we need to do.
- Includes priorities for Farmed landscape and soils as well as to other habitats that are likely found on your land including river systems and waterbodies.

FARMED LANDSCAPE & SOILS

Priority: FL1

Create and enhance opportunities for wildlife within the farmed landscape

- Appropriate (nature friendly/climate resistant) agro-forestry species and scrub are being used in places to provide shelter and shade for livestock, support biodiversity and deliver other benefits such as improved water quality, reduced flood risk and carbon sequestration.




Measures Part 2, Section 4

What are they?

- 100+ practical and achievable actions that can be implemented to deliver the priorities.
- Each has additional information about how and where they can be carried out, links to best practice and case studies and some examples of alignment with agri-environment schemes. Also, shows whether they are mappable.
- ‘Core’ measures supported by ‘Enabling’ measures – a set of additional actions that are *beyond the scope* of the LNRS but are important e.g. ‘*Support a farmer-led communications initiative to promote greater understanding of farming by the public*’.

Why is this relevant to you?

- Takes the strategy from high level steps to on-the-ground actions. 10 measures for farmland and soil specifically, but many of the other habitat measures will be relevant.

Code	Measures	How	Where	Further info/guidance
FL1.1	<p>Create permanent, species-rich and/or structurally diverse grass blocks, strips, margins or headlands to support pollinators and other wildlife.</p> <p>Unmapped</p> 	<p>Creation of permanent grassland blocks, margins, headlands and strips with species and structural diversity. Suitable techniques will depend on whether these are being created on arable land or pasture. On arable, techniques can include seeding, mowing (including removal of arisings). On pasture, techniques are more likely to involve grazing regimes (e.g. mob grazing).</p>	<p>This is good practice across farmland but particularly where greater habitat connectivity is needed and/or to support specific species. Concentrate on connecting these strips, blocks and headlands across land holdings to support larger scale connectivity. Size of buffers, margins, blocks etc, should be sufficient to provide ecological benefit but of a scale that is suitable for the landscape and field size.</p>	<p>Kent Wildlife Trust: Managing field margins for wildlife</p> <p>Agriculture: Field margins, hedgerows, woodland and scrub</p> <p>South Downs National Park: Managing habitats for farmland birds</p> <p>Gov.uk guidance for relevant ELMS options: CIPM2 Flower-rich grass margins, blocks or in-field strips</p> <p>Local case studies:</p> <p>South Downs Farmland Bird Initiative (page and story map)</p>



Priority species and measures

Part 3

What is it?

- A shortlist of our most at risk/iconic Sussex species and the specific interventions needed to recover them (over and above those that will improve habitats).
 - East: 160 priority species (additional 326 species supported by habitat measures).
 - West: 163 priority species (additional 338 species supported by habitat measures).

Why is this relevant to you?

- The most up-to-date and comprehensive analysis of priority species compiled for Sussex.
- Rigorously reviewed by panel of leading species experts.
- Highlights which species need additional actions.
- A benchmark from which to assess progress and future trends.


West Sussex Local Nature Recovery Strategy: Part 3 Priority Species Measures

Species	Information	Measures
Mouse-eared Bat <i>Myotis myotis</i>	Legal protection, CR. Rarest bat in Britain, but not resident with no maternity sites found for many years. Only two individuals of this species in the UK, both in West Sussex. Thought to be crossing the Channel to hibernate. Possible that there are undiscovered summer roosts in southern England. Key species: Hibernation roost protection key. Habitats: tunnels (hibernation roost); woodland edge, pasture/grassland, agricultural land (foraging).	<ol style="list-style-type: none"> 1. Protect hibernation roost e.g. through raising awareness with landowners. 2. Create, enhance and manage supporting foraging habitat for the species including woodland edges, pasture/grassland and agricultural land, especially in proximity to known hibernation roost and historic maternity roost site.
Dark-bellied Brent Goose <i>Branta bernicla bernicla</i>	S41, BoCC Red. Very common winter visitor and passage migrant. Chichester Harbour holds about 80% of birds wintering in Sussex. Stronghold for the species and considered iconic.	<ol style="list-style-type: none"> 1. Work with farmers to provide suitable crop or set aside pasture in winter months for geese to feed on. 2. Create and manage diverse coastal grasslands and marshes with ditches and scrapes of lagoons. 3. Ideally leave grasslands ungrazed over winter. 4. Reduce recreational disturbance through education.
Marsh Harrier <i>Circus aeruginosus</i>	Legal protection, BoCC Amber. Scarce passage migrant and winter visitor; very scarce breeder since 2004. Marshes and reedbeds.	<ol style="list-style-type: none"> 1. Maintain/enhance water quality in wetland and rivers around known sites e.g. by providing appropriate buffers, reducing the use of chemicals etc. 2. Manage reedbeds by e.g. grazing, cutting, scrub control etc.
White-tailed Eagle <i>Haliaeetus albicilla</i>	Legal protection, BoCC Amber. Rare vagrant. Reintroduction project on the Isle of Wight. Considered iconic. Coastal & wetland.	Survey/monitoring to assess success of reintroduction programme and to inform future management.

36 SussexNatureRecovery.org.uk

East Sussex and Brighton & Hove Local Nature Recovery Strategy: Part 3 Priority Species Measures

Species	Additional Information & Resources
Skylark <i>Alauda arvensis</i>	BoCC Red. Slight increase in range but population decline. Populations in non-agricultural habitats seem to have held up. Very common but declining resident in East Sussex and probably common passage migrant and winter visitor.
Stone-curlew <i>Burhinus oedipnemus</i>	Legal protection, S41, BoCC Amber. Scarce breeding summer visitor and passage migrant. Also found on chalky downland and grassy heaths.
Tree sparrow <i>Passer montanus</i>	S41, BoCC Red. Much declined and now very scarce resident; scarce passage migrant and winter visitor. Across East Sussex, breeding restricted to Rye Bay, Pevensey Levels and Brede Valley.
Turtle dove <i>Streptopelia turtur</i>	S41, BoCC Red. Red. Scarce and declining summer visitor and passage migrant. Breeding has drastically declined. Sussex holds c. 4.5% of the national population. Remaining stronghold around Rye Bay plus cluster in and around Ashdown Forest. Providing feeding resources for turtle doves
Yellowhammer <i>Emberiza citrinella</i>	BoCC Red. Common resident. Declined, and dependent on management of arable margins and heathland.



Skylark © iStock.com/MikeLane45
SussexNatureRecovery.org.uk

51 SussexNatureRecovery.org.uk



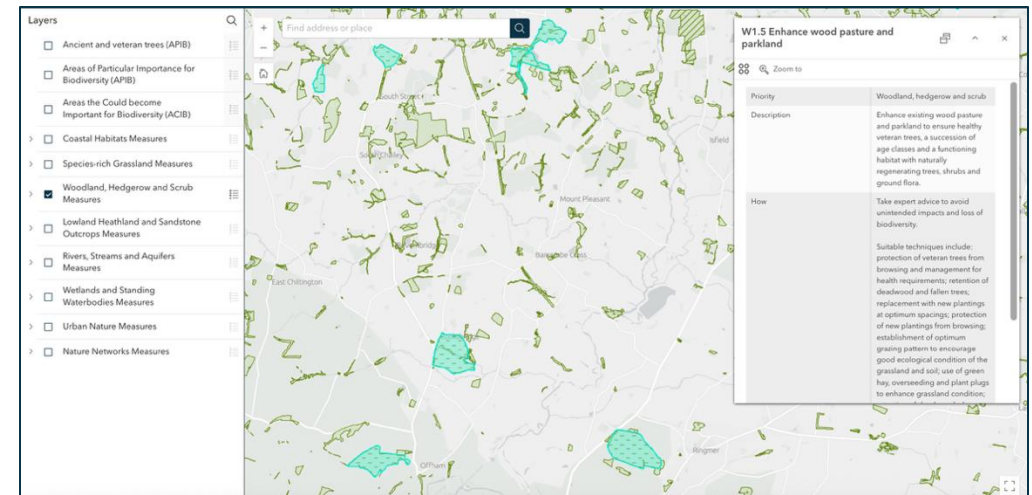
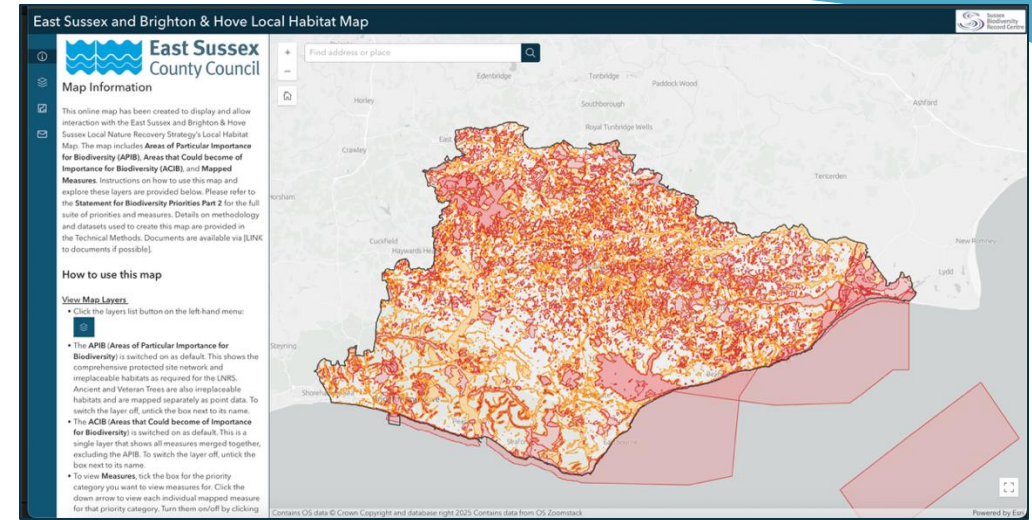
Local Habitat Map

What is it?

- Identifies locations where measures can feasibly be implemented that will have the greatest impact for nature/wider environmental benefits.
- Layers include:
 - Our existing designated sites for nature (*called Areas of Particular Importance for Biodiversity – APIB*).
 - Where a combined view of measures can be applied outside the APIB (*called Areas that Could become of Importance to Biodiversity – ACIB*).
- NB - 60% of measures are not mappable including all those for farmland and soils. Where measures not mapped this is due to: a lack of data to target effectively, a stipulation in the regulations, or there are no 'best' locations as they could be implemented everywhere (e.g. nesting and roosting boxes, buffer strips etc).

Why is this relevant to you?

- Guides where we should be focusing efforts, and which actions and habitats are best suited to the area.
- We are very aware that many of you will be using LandApp (our map is not as detailed). We hope to have some connection with LandApp in the future.



Navigating the Local Habitat Map

What happens next?

How the LNRS can help you help nature

- **Shows where we should be strategic** in focusing our effort and why.
- **Identifies a range of actions, case studies and further guidance** to improve or create habitats, manage soil or provide wider environmental benefits on your land.
- **Supports applications for funding** – whether via BNG, ELMS, FiPL, woodland creation or management grants - or private investment in biodiversity, carbon, or nutrient offsetting opportunities.
- Via the map, it **identifies where the best opportunities for actions for nature are located** and what the most appropriate action to take would be. Unmapped measures that are not targeted to specific locations should also be considered.
- Recognises **where there may be opportunities across wider spatial areas**, such as between neighbours or within farm clusters, to deliver actions at scale.
- Provides a **single set of priorities and actions** for all interested parties to rally behind, seek funding for and work together to deliver on the ground.
- Helps those interested to **see how their actions could make a contribution** to the broader county-wide ambition for nature.



Moving towards delivery

Supporting information

- Ecological evidence and data
- Existing priorities from 150 published plans & strategies
- Views and concerns from local people
- Existing projects, initiatives and ambitions
- Local/national expertise and rigour

The 'Tool kit'

7 principles

24 habitat priorities

100+ measures
(practical, feasible actions)

Prioritised species list and specific
species measures

Local Habitat Map

Putting it into action

- Respond to consultation and publish (Spring 2026)
- Responsible Authorities given statutory role in supporting and enabling delivery.
- Rally authorities, partners, stakeholders and the public around the LNRS.
- Embed LNRS in local planning.
- Identify, develop, publicise and track high-impact projects that advance priorities and showcase best practice.



How the LNRS works with planning

- **Strategic role:** Provide an evidence base for plan-making and inform planning decisions.
- **Legal Requirement:** Under the Environment Act, Local Planning Authorities must ‘have regard’ to the LNRS.
- **Material consideration:** Weight given to them is determined by the local decision maker.
- **Influence on Policy:** They can shape how local plans interpret national policy (e.g., NPPF biodiversity requirements).
- **Support for BNG:** the LNRS steers where offsite habitat creation/improvement should be targeted (but *does not* dictate locations).

Looking ahead

While the LNRS is expected to gain more influence under pending Levelling Up and Regeneration Act reforms, nothing is confirmed, and the view is that decisions now are likely to favour development.



Adding your voice to your LNRS

- Visit your LNRS hub and respond to the consultation before 26th November 2025
- Tell other farmers and land managers in your networks. We'll provide a comms tool kit to help you do that.
- There is support for those without digital access in Sussex libraries.

East Sussex and Brighton & Hove LNRS

<https://yourvoice.westsussex.gov.uk/lhrs-east>

West Sussex LNRS

<https://yourvoice.westsussex.gov.uk/lhrs-west>



Q&A